



INDEPENDENT
SCHOOL
DISTRICT 728

ELK RIVER | OTSEGO | ROGERS | ZIMMERMAN

2020

2021



HIGH SCHOOL COURSE REGISTRATION GUIDE

ELK RIVER HIGH SCHOOL
ROGERS HIGH SCHOOL
ZIMMERMAN HIGH SCHOOL
ONLINE728 HIGH SCHOOL



REGISTER ONLINE

www.isd728.org/RegisterForClasses



ADDITIONAL INFORMATION

www.isd728.org/CourseRegistration

2019-2020 ISD 728 Course Registration Guide



ELK RIVER HIGH SCHOOL

900 School Street
Elk River, MN 55330

763.241.3434

Fax: 763.241.3421

Counseling Fax: 763.241.3440

Administration Team

Terry Bizal, Principal	x2101	terrence.bizal@isd728.org
Julie Odegard, Asst. Principal	x2102	julie.odegard@isd728.org
Amanda Ohlgren, Asst. Principal	x2103	amanda.ohlgren@isd728.org
Bryan Scherr, Asst. Principal	x2104	bryan.scherr@isd728.org
Mike Cunningham, Activities Director	x2108	michael.cunningham@isd728.org
Jenn Bartlett, Senior Administrative Assistant	x2105	jennifer.bartlett@isd728.org

Counseling

Kim Davison, Counselor	x2141	kimberly.davison@isd728.org
Megan Niedfeldt, Counselor	x2172	megan.niedfeldt@isd728.org
Michelle Reimer, Counselor	x2142	michelle.reimer@isd728.org
Daniel Schmoyer, Counselor	x2143	daniel.schmoyer@isd728.org
Erin Shermak, Counselor	x2144	erin.shermak@isd728.org
ERHS Registrar	x2139	
Deb Whiteoak, Administrative Assistant	x2140	deborah.whiteoak@isd728.org



ROGERS HIGH SCHOOL

21000 141st Avenue
Rogers, MN 55374

763.274.3140

Fax: 763.274.3141

Counseling Fax: 763.274.3146

Administration Team

Jason Paurus, Principal	x1601	jason.paurus@isd728.org
Ryan Johnson, Asst. Principal	x1602	ryan.johnson@isd728.org
Jill Engquist, Asst. Principal	x1603	jill.engquist@isd728.org
Michael Zeman, Asst. Principal	X1784	michael.zeman@isd728.org
Dan Ohlgren, Activities Director	x1605	daniel.ohlgren@isd728.org
Jessica Zoubek, Senior Administrative Assistant	x1613	jessica.zoubek@isd728.org

Counseling

Shannon Macken, Counselor (Grade 9)	X1713	shannon.macken@isd728.org
Dawn Morrison, Counselor (Grade 10)	x1609	dawn.morrison@isd728.org
Anne Bartus, Counselor (Grade 11)	x1608	anne.bartus@isd728.org
Jacy Shrestha, Counselor (Grade 12)	X1789	jacy.shrestha@isd728.org
Lauren Handrick, College & Career Specialist	X1728	lauren.handrick@isd728.org
Sheri Jean-Mathis, Admin. Asst. (Grades 9&10)	x1615	sheri.jean-mathis@isd728.org
Lynne Cleaveland, Admin. Asst. (Grades 11&12)	x1610	lynne.cleaveland@isd728.org



ZIMMERMAN HIGH SCHOOL

25900 – 4th St W
Zimmerman, MN 55398

763.241.3505

Fax: 763.241.3506

Counseling Fax: 763.241.3506

Administration Team

Marco Voce, Principal	x2801	marco.voce@isd728.org
Lisa Johnson, Asst. Principal	x2811	lisa.e.johnson@isd728.org
Kurran Sagan, Asst. Principal	x2802	kurran.sagan@isd728.org
Jaime Hilyar, Activities Director	x2810	jaime.hilyar@isd728.org
Laura Houser, Senior Administrative Assistant	x2803	laura.houser@isd728.org

Counseling

Jackie Brenny, Counselor (A-M)	x2927	jaclyn.brenny@isd728.org
Brandon Stoermann, Counselor (N-Z/Col&Car)	x2805	brandon.stoermann@isd728.org
Kate Mager, Administrative Assistant	x2806	kathryn.mager@isd728.org

Table of Contents

REGISTRATION INFORMATION	1
Alternate Choices	
Credits	
Dropping Classes	
Fees for Classes	
Middle School Credits	
Repeating Classes	
Schedule Changes	
Students with IEPs	
Transportation	
HIGH SCHOOL GRADUATION REQUIREMENTS	2
Academic System	
Graduation Requirements	
GRADING SCALE AND HONOR ROLL	2-3
Grading Scale	
Grading Weights	
Honor Roll	
Incomplete Grades	
ADDITIONAL PROGRAM OPPORTUNITIES	3-4
Advanced Placement (AP)	
Advancement Via Individual Determination (AVID)	
Articulated College Credit (ACC)	
Concurrent Enrollment	
English Learner (EL) Program	
Independent Study	
Nursing Assistant (NA)	
Online728	
Peer Tutors	
Student Proctors	
Study Hall Reserve	
Zimmerman Biomedical Program	
HIGH SCHOOL EXTRA-CURRICULAR ACTIVITIES ELIGIBILITY INFORMATION	5
POST-SECONDARY ENROLLMENT OPTIONS (PSEO)	5
COLLEGE ADMISSION INFORMATION	6
State College Admission Requirements	
Private and Out-of-State College Admission Requirements	
COLLEGE ATHLETIC ELIGIBILITY	6
ISD 728 CTE CAREER PATHWAYS	7
APPENDIX 1: CLASSROOM FEES	8
HIGH SCHOOL FOUR-YEAR PLANNING GUIDE	9

DISCLAIMER: Information presented in this Registration Guide is current at time of printing. Due to decisions at the local or state level, changes may be made to this guide at any time. Please check the counseling website for changes.

REGISTRATION

1. Please read all instructions in this booklet carefully.
2. When selecting your courses:
 - Consider general requirements for graduation.
 - Review the course descriptions located in the Course Description Guide.
 - Decide which courses you want to take in high school, based on your post high school plans.
 - Discuss plans with your parents.
 - Consult with teachers, counselors, and employers.
 - Use information that you have available about yourself, such as test results, interest inventories, and past grades.
 - Check entrance requirements for colleges and other post-secondary programs before you select courses.
3. Obtain teacher permission, if needed.
4. Complete Course Request form.
5. Complete online registration.

ALTERNATE CHOICES

Arranging a schedule for a school is very difficult. Not everyone will receive the classes he/she chooses. Therefore, students must choose some alternate classes. **AN ALTERNATE CLASS WILL BE SCHEDULED IF THE ORIGINAL CLASS CHOSEN CANNOT BE SCHEDULED.**

CREDITS

Except as noted, one credit is given for successful completion of a semester of class. Students registering for full-year classes **MUST** register for both semesters of the class during the registration process.

DROPPING CLASSES

Dropping of classes after the first day of a semester shall be accomplished through the use of a drop/add form available from the Guidance Office. Dropping/adding a class will require the student to meet with their counselor, as well as to obtain parent and teacher release signatures. When dropping a class after the end of the 1st and 3rd quarter (as designated by secondary school calendar), a failing grade in the dropped class will appear as an "F" even though the course was dropped; a non-failing grade will appear as a "W" on the transcript.

College credit courses (on high school or college campus) may have different deadlines for dropping courses. See your counselor for details.

FEES FOR CLASSES

Public education in Minnesota is free to all students who are residents. However, course fees may be charged if a project is completed that is in excess of the material requirements of the minimum course outline, provided that the student elects to do such a project with the approval of the instructor. The student may elect to take projects home and the cost of such projects must be paid if school materials are used. Students may provide their own materials for such project, again with the approval of the instructor. A student may still receive full course credit without fee payment. A list of course fees can be found in Appendix 1.

Students may be subject to additional course fees in the case of damaged or destroyed equipment or materials, courses that involve lab fees, field trips, and/or other incidental circumstances. Please refer to the student handbook for a complete list of fees

MIDDLE SCHOOL CREDITS

Students in the Class of 2020 and beyond who have completed a high school course offered in ISD 728 during middle school can opt to have the grade posted to their high school transcript. Grades will not be weighted.

REPEATING COURSES

Students have the option of re-taking any course if they want to attempt to improve their overall grade for the course. Students who would like to repeat a course to improve their grade should talk to their school counselor and complete a request form before beginning the course.

SCHEDULE CHANGES

Choose courses carefully as changes will only be made for the following reasons: 1) Teacher recommendation; 2) Medical reason; and 3) Inappropriate placement.

In general, schedule changes can be made within the first five days of a semester. If you have questions or concerns, please see your counselor.

STUDENTS WITH IEPS

Students with IEPs should work with their case manager to register for courses.

TRANSPORTATION

ISD 728 has made a commitment to offer transportation for enrolled high school students who want to take a course that is not hosted at their assigned school. Contact your counselor for further details.

HIGH SCHOOL GRADUATION REQUIREMENTS

ACADEMIC SYSTEM

ISD 728 operates on a semester system. One semester is approximately eighteen weeks long and there are two semesters in a school year. Each semester is separate and grades from yearlong classes are not averaged together. There are six class periods per day.

GRADUATION REQUIREMENTS

The graduation requirements for ISD 728 students are determined by the school board.

Complete Credit Requirements

	# of Credits
English	8
Social	7
Math	6
Science	6
Fine Arts	2
Health	1
Physical Education	1
Elective Courses	12
TOTAL CREDITS	43

In addition, the Minnesota Department of Education has specific credit requirements in the following areas:

Math: Complete an Algebra I credit by the end of grade 8, take 2 Geometry credits, and earn 2 Algebra II credits.

Science: Earn 2 Biology credits and earn 2 Chemistry OR 2 Physics credits

Social Studies: Students must earn credits in the following areas: economics, geography, government, United States history, and world history.

Assessment Requirements

Students are provided with an opportunity to take a national college entrance exam in grades 11 or 12 during the regular student day. Presently, the exam that is offered is the ACT and taking this exam is not a requirement.

GRADING SCALE AND HONOR ROLL

GRADING SCALE

Grades are assigned based on the percentage of points earned in each course. The chart (below) is used by high schools in ISD 728 to determine the academic grade that students receive.

100-94 = A	93-90 = A-	89-87 = B+
86-83 = B	82-80 = B-	79-77 = C+
76-73 = C	72-70 = C-	69-68 = D+
67-66 = D	65 = D-	64-0 = F

GRADING WEIGHTS

Grades that students earn in their courses are used to calculate their overall Grade Point Average (GPA). To calculate GPA, grades are assigned Honor Points based on a 4.00 grading scale. Advanced Placement (AP) and concurrent enrollment courses have a high level of difficulty and earn Honor Points based on the Weighted Class Honor Points scale. All other classes earn Honor Points based on the Regular Class Honor Points scale.

Grade	Regular Class Honor Points	Weighted Class Honor Points
A	4.00	4.34
A-	3.67	4.00
B+	3.34	3.67
B	3.00	3.34
B-	2.67	3.00
C+	2.34	2.67
C	2.00	2.34
C-	1.67	2.00
D+	1.34	1.34
D	1.00	1.00
D-	.67	.67
F	.00	.00

Courses with weighted grading in ISD 728 include:

AP Art History	AP U.S. Government/Politics
AP Biology	AP U.S. History
AP Calculus AB	AP World History
AP Calculus BC	College Algebra
AP Chemistry	College Intermediate Spanish I & II
AP Computer Science	College Intro to Psychology
AP Eng. Language & Comp	College Intro to Sociology
AP Eng. Literature & Comp	College Physics I
AP Human Geography	College Pre-Calculus
AP Macroeconomics	College Principles of Macroeconomics
AP Music Theory	French 102 & 201
AP Physics	German 102 & 201
AP Statistics	Human Physiology, Technology & Medical Devices
AP Studio Art	

HONOR ROLL

Each semester, an A and B Honor Roll will be determined. To be eligible for either honor roll, students must be enrolled as a full-time student (registered for at least 5 credits) and students may not have an F or I on their report card. Additionally, students may have only 1 P assigned.

Students with a semester GPA of 3.51 and above will be designated for the "A" honor roll while students with a semester GPA of 3.00-3.50 will be designated for the "B" honor roll.

INCOMPLETE GRADES

A semester grade of "I" means that all the requirements for credit have not been met, but that the student has the opportunity to complete the remaining work to receive credit. The student will have 10 days after semester grades are posted, or such time as determined by the teacher and student to be appropriate for completion.

ADDITIONAL PROGRAM OPPORTUNITIES

ADVANCED PLACEMENT (AP)

Advanced Placement (AP) classes are nationally recognized college-level classes offered in the high school setting. Students who complete the course work can take an AP test which may award college credit(s). Students enrolled in AP courses should anticipate college-level workloads and expectations. It is strongly recommended that sophomores enroll in no more than two AP classes during 10th grade. Remember: Advanced Placement is a nationwide curriculum designed to prepare students for the AP exams; therefore course content cannot be altered.

The following AP classes are offered in ISD 728:

AP Art History	AP Macroeconomics
AP Biology	AP Music Theory
AP Calculus AB	AP Physics
AP Calculus BC	AP Statistics
AP Chemistry	AP Studio Art
AP Computer Science	AP U.S. Gov/Politics
AP Eng. Literature & Composition 12	AP U.S. History
AP Eng. Language & Composition 11	AP World History
AP Human Geography	

AP course grades are "weighted" (see page 2).

ADVANCEMENT VIA INDIVIDUAL DETERMINATION (AVID)

The Advancement Via Individual Determination (AVID) mission is to ensure that ALL students, and most especially the least served students who are in the middle:

- * Will succeed in rigorous curriculum,
- * Will complete a rigorous college preparatory path,
- * Will enter mainstream activities of the school,
- * Will increase their enrollment in four-year colleges,
- * Will become educated and responsible participants and leaders in a democratic society.

AVID students in grades 9-12 must be enrolled in an AVID class, enroll in one or more advanced academic classes each semester, maintain satisfactory citizenship and attendance in all classes, maintain the AVID binder with assignments/grade record sheets and daily notes in all classes, and complete all homework assignments and commit to studying every night.

ARTICULATED COLLEGE CREDIT (ACC)

Sophomores, juniors and seniors may take technical and/or community college courses offered at the high school. These high school courses have been matched with similar courses at Minnesota technical and community colleges (for a full list of participating schools visit www.CTECreditMN.com). High school students meeting the college course requirements may earn college credit, as well as high school credit to apply toward graduation at no cost to high school students. ACC courses are not "weighted".

CONCURRENT ENROLLMENT

ISD 728 has partnered with Pine Technical and Community College, St. Cloud State University, and the University of Minnesota to offer the following rigorous college-level classes to students in the high school setting. Students earn college credits in conjunction with meeting high school graduation requirements. There is no student fee to enroll in these programs and, upon successful completion of these course(s), the student will earn both high school and college credits. In addition, these courses are "**weighted**" (see page 2).

Refer to the Course Description Guide for prerequisite(s) required to enroll in these courses.

Students enrolled in these courses begin their college transcript with the partnering college so please consider your enrollment options carefully.

- **Pine Technical College**
College Algebra
College Intermediate Spanish I & II
College Intro to Psychology
College Intro to Sociology
College Physics I
College Pre-Calculus
College Principles of Macroeconomics
- **St. Cloud State University (S2S)**
French 102 & 201
German 102 & 201
- **University of Minnesota (Twin Cities)**
Human Physiology, Technology & Medical Devices

ENGLISH LEARNER (EL) PROGRAM

The EL Program serves and supports students who have not achieved English language proficiency and provides academic assistance for mainstream classes. The amount of time per day that students receive EL instruction and the duration of service is dependent on the level of language proficiency. See the EL teacher for more information.

INDEPENDENT STUDY

Independent study contracts between teachers and juniors or seniors are permitted. The contracts may be arranged for up to two credits per contract. The objectives, resources and evaluation procedures are to be listed, with all required signatures, prior to the study. Applications are available in the Guidance Office. The completed contract must be turned in by the tenth (10th) day of the semester in which the work is to occur. Independent study contracts must be approved by administration and are limited to one per semester.

NURSING ASSISTANT (NA)

The Nursing Assistant (NA) program provides classroom and clinical training for individuals interested in pursuing direct patient care in hospitals, nursing homes or home health care settings. The course includes orientation, basic skills assessment tests, classroom/lab training and hands on clinical training at a local healthcare facility. Upon completion of all class and clinical hours, students will be eligible to take the state exam (student fee applies) and upon passing, will be recognized by the State of Minnesota in its registry of Nursing Assistants.

ONLINE728

ISD 728 offers a variety of courses available in an online format. The pace and structure of an online course is very different than traditional face-to-face classes. Enrolling in an online class can be a great experience and requires self-discipline, independence and the ability to communicate virtually with your instructor. Students enrolled in Online728 courses will also have access to a Drop-In Room for individual assistance when needed. Core courses, as well as some electives, are offered through Online728.

Both full-time and supplemental schedules are options for students at this time. Please note two very important points. One Online728 enrollment will be limited, so indicating your preference for an online course does not guarantee enrollment; Two Parental permission is needed for enrollment acceptance. Parental permission is NOT needed at the time of indicating your schedule preference.

If you are unsure if an online course is right for you, contact your school counselor or visit the Online728 website: <http://www.isd728.org/online728>

PEER TUTORS

Peer tutors provide assistance to other students and receive one elective credit per semester toward graduation. To meet the qualifications for credit, peer tutors must meet the expectations of the staff member they are working with and have an appropriate attendance record. Juniors and seniors interested in being a peer tutor must speak with a counselor prior to registration. This is a Pass/Fail course and doesn't affect the student's semester or cumulative GPA.

STUDENT PROCTORS

Student proctors assist school staff and receive half (1/2) credit per semester toward graduation if their work record, cooperation, and attendance meet department standards. Juniors and seniors may proctor a maximum of half (1/2) credit per semester, and up to one credit per four-year program. Permission to participate is required. Proctor programs are available with many teachers, the Media Center, Administrative Office, Guidance Office, Attendance Office, and Health Office. This is a Pass/Fail course and does not affect a student's cumulative GPA.

STUDY HALL RESERVE

Juniors and seniors may apply to reserve a 1st or 6th hour study hall for early release or late arrival. To qualify for this program, student must have earned enough credits to be proceeding normally toward graduation (see chart below). **No credit is granted for this program.**

STUDY HALL RESERVE CREDIT REQUIREMENT	
Grade	Credits Earned
11 th grade – beginning of year	23
11 th grade – end of 1 st semester	28
11 th grade – end of 2 nd semester	33
12 th grade – end of 1 st semester	38

*To enroll:

1. Complete an application from the Guidance Office and obtain parent permission prior to registration.
2. Select study hall reserve when you register.

ZIMMERMAN BIOMEDICAL PROGRAM

The Biomedical Program is a series of courses which explore the concepts of human medicine. Students examine the processes, structures, and interactions of the human body as well as explore the prevention, diagnosis, and treatment of disease. Interested students in the district should contact Zimmerman High School about the possibility of participating in this program. Transportation is available for students living in the RHS and ERHS zones.

HIGH SCHOOL EXTRA-CURRICULAR ACTIVITIES ELIGIBILITY INFORMATION

Refer to your school's *Student Handbook* for academic eligibility for high school extra-curricular activities.

High School Extra-Curricular Activities include:

1. Competitive athletic activities.
2. Competitive enrichment activities.
3. Non-competitive athletic activities.
4. Non-competitive enrichment activities.

POST-SECONDARY ENROLLMENT OPTIONS (PSEO)

Postsecondary Enrollment Options (PSEO) is a program that allows 10th-, 11th- and 12th-grade students to earn both high school and college credit while still in high school, through enrollment in and successful completion of college nonsectarian courses at eligible participating postsecondary institutions. Most PSEO courses are offered on the campus of the postsecondary institution; some courses are offered online. Each participating college or university sets its own requirements for enrollment into the PSEO courses. Eleventh and 12th-grade students may take PSEO courses on a full- or part-time basis; 10th graders may initially take one Career and Technical Education (CTE) PSEO course. If 10th graders taking a CTE PSEO course earn at least a grade C in that class, they may take additional CTE PSEO courses. Students must meet the PSEO residency and eligibility requirements and abide by participation limits specified in Minnesota Statutes, section 124D.09. If a school district determines a pupil is not on track to graduate, she/he may continue to participate in PSEO.

There is no charge to PSEO students for tuition, books or fees for items that are required to participate in a course. Enrolling in a PSEO course does not prohibit a student from participating in activities sponsored by the high school.

PSEO students are allowed reasonable access to the high school building, computers and/or other technology resources during regular school hours to participate in PSEO courses, whether on-line or on campus.

For full-time PSEO students who begin in their junior year, it is possible to graduate from high school with enough college credits for an Associate's Degree.

Qualifications: The major college and university systems in Minnesota have provided the following guidelines for

acceptance into their PSEO programs (visit the school's website for a complete list of qualifications):

Minnesota State Colleges and Universities: <http://minnstate.edu/admissions/pseo/index.html>

- High school seniors must be in the upper one-half of their class or score at or above the 50th percentile on the ACT or SAT.
- Juniors must be in the upper one-third of their class or score at or above the 70th percentile on a test, such as the ACT or SAT.
- Sophomores may enroll in a career or technical education course at a Minnesota State college or university if they have attained a "Meet or Exceed" on the 8th grade MCA reading test and meet other enrollment standards established by the college.

University of Minnesota: <https://ccaps.umn.edu/post-secondary-enrollment-options-pseo>

The U of M PSEO program welcomes applications from 11th or 12th grade students (incoming juniors and seniors) who have lived in Minnesota for over a year, have an unweighted high school GPA of 3.600 or greater (*exceptions may be granted for School of Music applicants*), and meet the Minnesota Department of Education criteria (click on the "Postsecondary Enrollment Options Reference Guide located at <http://education.state.mn.us/MDE/fam/dual/pseo/>).

Mileage Reimbursement Program: Funds are available to help pay transportation expenses for PSEO students whose families are at or below the poverty level, as determined by the federal government, to participate in PSEO courses on college campuses.

Grading & Credits: Students who transfer completed PSEO course credits back to their high school will receive Regular Honor Points for each course. Credits will be awarded based on the following chart:

College Semester Credits	High School Semester Equivalents
1	0.5
2	1.0
3	1.5
4	2.0

While PSEO provides a rigorous opportunity for students to access a wide variety of options, students are still expected to meet ISD 728 requirements in order to graduate with a high school diploma.

For more information about the PSEO program, transportation reimbursement and application procedures, please contact your high school counselor or visit the MDE PSEO page: <http://education.state.mn.us/MDE/fam/dual/pseo/>

COLLEGE ADMISSION INFORMATION

STATE COLLEGE ADMISSION REQUIREMENTS

Minnesota public colleges and universities are aligned with either the University of Minnesota (U of M) system or the Minnesota State College and University system. While both systems have their own admissions processes, they each have a core set of prerequisites that students are expected to complete before beginning their study.

In addition to class rank and standardized test score requirements, both systems have the following course completion requirements for high school graduates:

- * **Four years of English,**
- * **Three years of math (4 years of math at U of M),**
- * **Three years of science,**
- * **Three years of social studies,**
- * **Two years of a single world language, and**
- * **One year of visual and/or performing arts.**

Each system has additional clarifiers about their core course expectations and schools and colleges within these systems may have additional requirements. In addition, each system will have additional information about community technical college options that are available.

To learn more about the U of M requirements and for campus locations, please visit their website at <http://admissions.tc.umn.edu/freshman/overview.html>

To learn more about the Minnesota State requirements and for campus locations, please visit their website at <http://minnstate.edu/admissions/index.html>

PRIVATE AND OUT-OF-STATE COLLEGE ADMISSION REQUIREMENTS

Private and out-of-state colleges and universities may have different admission requirements. For more detailed information, please contact the college you are interested in attending for admission requirements. Additional information on the requirements for private schools within the state of Minnesota can be found at: www.mnprivatecolleges.com

COLLEGE ATHLETIC ELIGIBILITY

If you intend to participate in NCAA Divisions I or II athletics as a college freshman, you must register with the NCAA Initial Eligibility Clearinghouse prior to graduation. Follow the application directions on the Clearinghouse website: www.eligibilitycenter.org. The Clearinghouse will issue a preliminary certification report when you have submitted all of your materials. The following chart shows what your courses must include at a minimum.

NCAA Core Course Requirements (16 Core Courses)		
	Division I	Division II
English	4 Years	3 Years
Math (Algebra I or higher)	3 Years	2 Years
Science (natural/physical), including one year of lab science, if offered	2 Years	2 Years
Additional English, Math, and/or Science	1 Year	3 Years
Social Science	2 Years	2 Years
Additional courses from English, math, science, social science, foreign language, comparative religion or philosophy	4 Years	4 Years

DIVISION I	
Full Qualifier <i>*Athletics aid, practice, and competition</i>	Academic Redshirt Requirements <i>*Athletics aid and, practice (no competition 1st year)</i>
<ul style="list-style-type: none"> • Complete 16 core courses <ul style="list-style-type: none"> ○ Ten (10) of the 16 core courses must be completed before the seventh semester (senior year) of high school. ○ Seven (7) of the 10 must be in English, math or science. • Earn a core-course GPA of at least 2.300 • Earn the ACT/SAT score matching your core-course GPA on the Division I sliding scale • Graduate from high school 	<ul style="list-style-type: none"> • Complete 16 core courses • Earn a core-course GPA of at least 2.000 • Earn the ACT/SAT score matching your core course GPA on the Division 1 sliding scale. • Graduate from high school

DIVISION II (Student-athletes first enrolling on or after August 1, 2018)	
Full Qualifier <i>*Athletics aid, practice, and competition</i>	Partial Qualifier <i>*Athletics aid and, practice (no competition 1st year)</i>
<ul style="list-style-type: none"> • 16 core courses • Earn a core-course GPA of at least 2.200 • Earn the ACT/SAT score matching your core-course GPA on the Division II full qualifier sliding scale • Graduate from high school 	<ul style="list-style-type: none"> • Complete 16 core courses • Earn a core-course GPA of at least 2.000 Earn the ACT/SAT score matching your core-course GPA on the Division II partial qualifier sliding scale • Graduate from high school

Download a free copy of
2018-19 NCAA Guide for the College Bound Student Athlete
<http://www.ncaapublications.com>

Only courses that satisfy the NCAA definition of a core course can be used to calculate your NCAA GPA. No special values are allowed for "+" or "-" grades. **It is the student's responsibility to ensure that NCAA eligibility requirements have been met.** For an up-to-date listing of ISD 728 NCAA approved courses by high school, visit the [NCAA Eligibility Center](http://www.ncaa.org/eligibility-center) and use the following codes: **ERHS:240720 RHS:242110 ZHS:242764**

The NCAA Initial-Eligibility Clearinghouse uses this list of courses in establishing the certification status of student-athletes from your school. After graduation, the Clearinghouse will review your **final** transcript to make a final certification decision according to NCAA standards.

NAIA : Students interested in participating in schools that belong to the National Association of Intercollegiate Athletics should review the requirements located at the NAIA website: www.naia.org

ISD 728 CTE CAREER PATHWAYS

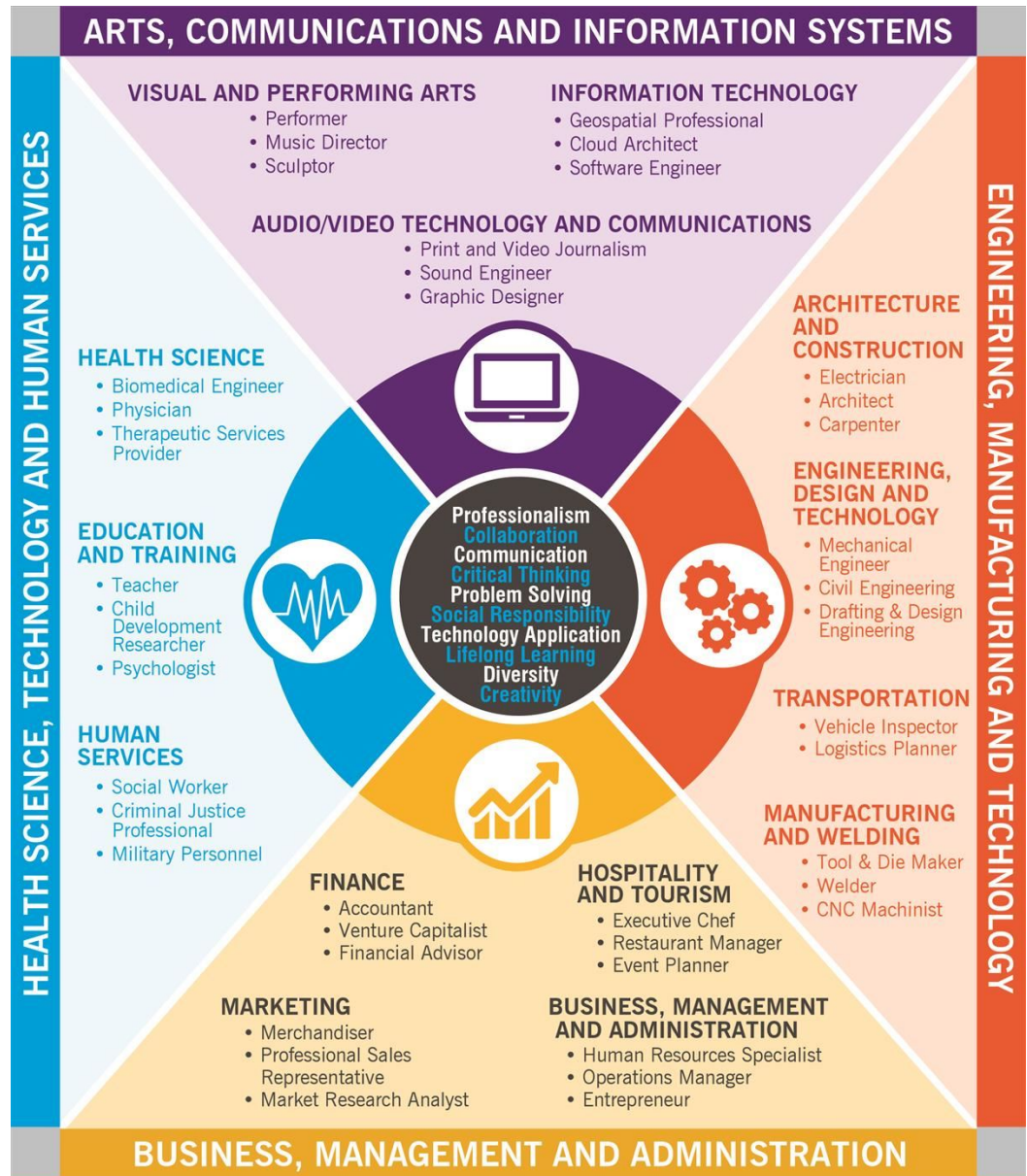
ISD 728 has organized elective courses into four broad career fields and fifteen specific pathways.

A pathway is a series of classes that students can take that will help them follow their interests and prepare for future education, training and work opportunities.

As students learn more about their interests, they can explore one or more pathways, which will help them:

- Plan their education in high school and beyond.
- Prepare for college and career.
- Explore classes that might interest them.
- Understand how classes and careers fit together.

The list of careers under each pathway are just a few examples. For additional careers and specific courses, review the Career Field Charts by clicking the category links below.



- [Arts, Communications and Information Systems](#)
- [Business, Management and Administration](#)
- [Engineering, Manufacturing and Technology](#)
- [Health Science Technology and Human Services](#)

For more information on CTE opportunities in ISD 728 please visit www.isd728.org/cte

APPENDIX 1: CLASSROOM FEES

The classes listed below have a standard fee that is used to pay for the projects that are in excess of the material requirements of the minimum of the course. The stated fees are the amount charged in 2019-20 and are subject to change. Please click on [this link](#) for the most current fees for courses.

Department	Course Name	Course #	Course fee
Art	AP Studio Art: 2-D Design	10311/10312	\$30.00
Art	AP Studio Art: 3-D Design	10301/10302	\$35.00
Art	AP Studio Art: Drawing	10321/10322	\$30.00
Art	Clay - Advanced Handbuilding	10120	\$35.00
Art	Clay I	10010	\$30.00
Art	Clay II	10020	\$35.00
Art	Clay III	10110	\$35.00
Art	Drawing I	10030	\$20.00
Art	Drawing II	10040	\$25.00
Art	Drawing III	10130	\$25.00
Art	Intro to Art & Design	10280	\$25.00
Art	Jewelry I	10050	\$40.00
Art	Jewelry II	10060	\$40.00
Art	Jewelry III	10250	\$45.00
Art	Painting I	10070	\$35.00
Art	Painting II	10080	\$35.00
Art	Painting III	10270	\$35.00
Art	Sculpture	10090	\$35.00
Family & Consumer Science	Culinary Arts I	13120	\$35.00
Family & Consumer Science	Culinary Arts II	13130	\$35.00
Family & Consumer Science	ProStart I - 1hr 1st Sem/1hr 2nd Sem	13171/13172	\$35.00
Family & Consumer Science	ProStart II - 1hr 1st Sem/2hrs 2nd Sem	13171/13182	\$35.00
Family & Consumer Science	Senior Strategies	13160	\$15.00
Industrial Technology	Computer Aided Engineering & Design I	16021/16022	\$20.00
Industrial Technology	Computer Aided Engineering & Design II	16031/16032	\$20.00
Industrial Technology	Digital Photography I	16080	\$35.00
Industrial Technology	Digital Photography II	16090	\$35.00
Industrial Technology	Digital Photography III	16100	\$35.00
Industrial Technology	Graphic Design	16041/16042	\$30.00
Industrial Technology	Graphic Design - Introduction	16040	\$30.00
Industrial Technology	Small Engines & PowerSports	16210	\$40.00
Industrial Technology	Welding Fabrication I	16480	\$40.00
Industrial Technology	Welding Fabrication II	16490	\$40.00
Industrial Technology	Woods I	16121/16122	\$60.00
Industrial Technology	Woods II	16160	\$40.00
Industrial Technology	Woods III	16190	\$40.00
Music	Band	19001/19002	TBD
Music	Band & Choir Combo	19051/19052	TBD
Physical Education	Aerobics	20500	\$10.00
Physical Education	Aerobics - Advanced	20521/20522	\$10.00
Physical Education	Aerobics - Advanced - Semester Only	20520	\$10.00
Physical Education	Individual & Dual Activities	20530	\$9.00

High School Four-Year Planning Guide for the Class of 2021 to 2024

GRADUATION CREDIT REQUIREMENTS (Total of 43 credits):

ENGLISH = 8 credits (4 years)

MATH = 6 credits (3 years; **2 credits earned in Algebra II & taking Geometry is required)

SCIENCE = 6 credits (3 years; **2 credits earned in Biology **AND** 2 credits earned in Chemistry or Physics is required)

SOCIAL = 7 credits (3.5 years)

FINE ART = 2 credits (can be completed anytime during grades 9-12)

HEALTH = 1 credit (can be completed anytime during grades 10-12)

PHY ED = 1 credit (can be completed anytime during grades 9-12)

ELECTIVES = 12 credits (*can be compiled of general elective courses and credits earned after the graduation requirements per discipline have been met.*)

GRADUATION ASSESSMENT REQUIREMENTS: Students will be offered to take a **College Entrance Exam** (ACT or other in 11th grade)

GRADE 9	Cr.
English	2.0
Mathematics	2.0
**Science	2.0
Social Studies (Human Geography)	1.0
Physical Education	1.0
Fine Art	1.0
Electives:	3.0
Total Credits: _____	
Career Choice:	

GRADE 10	Cr.
English	2.0
**Mathematics	2.0
**Science	2.0
Social Studies (US History)	2.0
Fine Art	1.0
Health	1.0
Electives:	2.0
Total Credits: _____	
Career Choice:	

GRADE 11	Cr.
English	2.0
**Mathematics	2.0
**Science	2.0
Social Studies (World History or Art History)	2.0
Electives:	4.0
Total Credits: _____	
Career Choice:	

GRADE 12	Cr.
English: (Literature)	1.0
(Writing/Speaking)	1.0
Social Studies: (Government)	1.0
(Economics)	1.0
Electives:	8.0
Total Credits: _____	
Career Choice:	